



Shock Absorber

PATENT

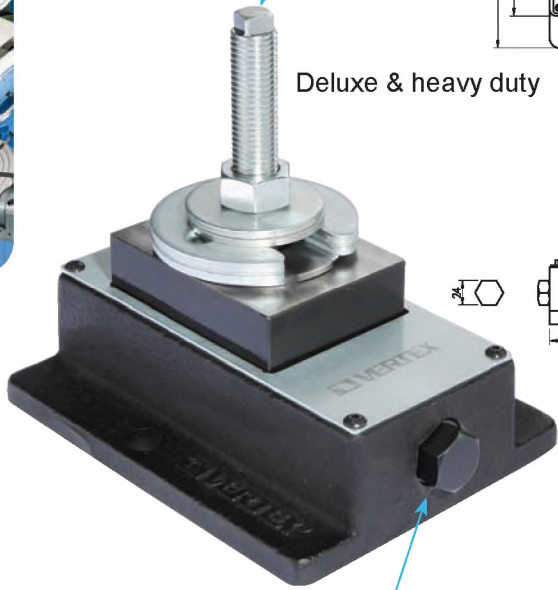


Machine Stand

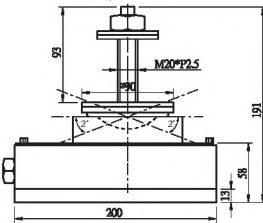
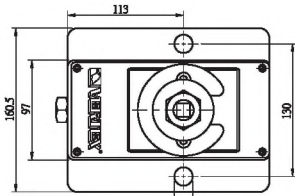
NEW

Square head

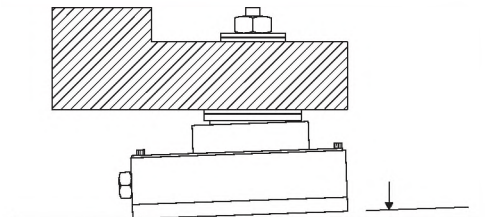
Deluxe & heavy duty



Adjustable screw

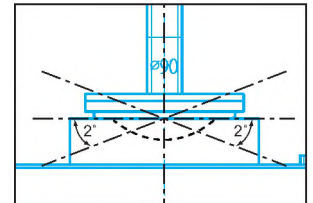


SPACER FOR MORE ADJUSTABLE



For uneven ground-angle $\pm 2^\circ$

- Leveling
- Reduce Vibration
- Increase Stability
- Frictionless
- Precision & Accurate



STEP

- Place shock absorbers under machine.
- When shock absorbers have full contact with machine base, you can start to adjust the leveling.

ORDER NO.	L x W x H	THREAD	LOAD kgs	UNEVEN GROUND ANGLE	ADJUSTMENT HEIGHT / FROM ADJUSTABLE SCREW	WEIGHT KGS	CODE NO.
VSA-150K	200 x 160.5 x 191	M20 x 93L	22500	$\pm 2^\circ$	7 mm	9.32	7001-180



Shock Absorber

PATENT

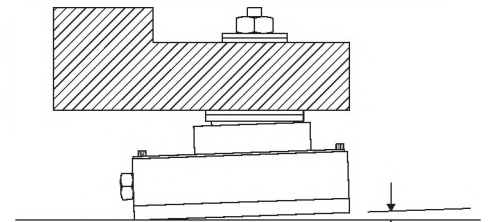
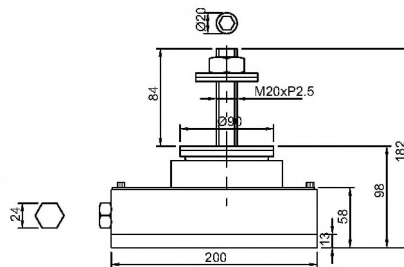
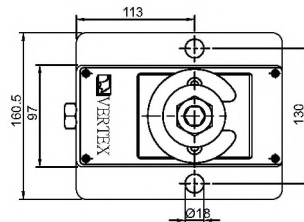
Machine Stand

NEW

Set head

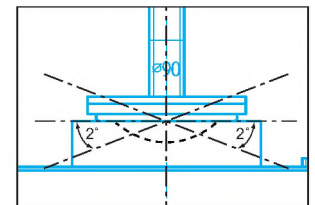


SPACER FOR MORE ADJUSTABLE



For uneven ground-angle $\pm 2^\circ$

- Leveling
- Reduce Vibration
- Increase Stability
- Frictionless
- Precision & Accurate



STEP

- Place shock absorbers under machine.
- When shock absorbers have full contact with machine base, you can start to adjust the leveling.

ORDER NO.	L x W x H	THREAD	LOAD kgs	UNEVEN GROUND ANGLE	ADJUSTMENT HEIGHT / FROM ADJUSTABLE SCREW	WEIGHT KGS	CODE NO.
VSA-150H	200 x 160.5 x 182	M20 x 84L	22500	$\pm 2^\circ$	7 mm	9.32	7001-190

Shock Absorber



PATENT

Machine Stand

NEW

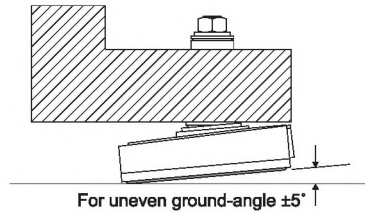
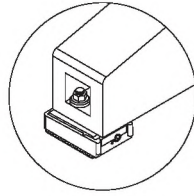


VSA-35K

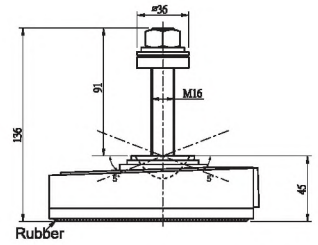
Adjustable screw



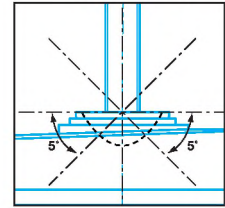
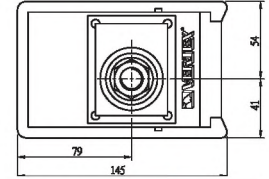
VSA-35K-6RU



For uneven ground-angle $\pm 5^\circ$



Rubber



- Leveling
- Reduce Vibration
- Increase Stability
- Frictionless
- Precision & Accurate

STEP

- Place shock absorbers under machine.
- When shock absorbers have full contact with machine base, you can start to adjust the leveling.

ORDER NO.	L x W x H	ADJ. THREAD LENGTH	LOAD kgs	UNEVEN GROUND ANGLE	RUBBER	ADJUSTMENT HEIGHT / FROM ADJUSTABLE SCREW	WEIGHT KGS	CODE NO.
VSA-35K	145 x 95 x 136	M16 x 91L	6300	$\pm 5^\circ$	2 m/m x 80° shore	7 mm	1.61	7001-160
VSA-35K-6RU	145 x 95 x 140	M16 x 91L	6300	$\pm 5^\circ$	6 m/m x 90° shore	7 mm	1.61	7001-161

Shock Absorber

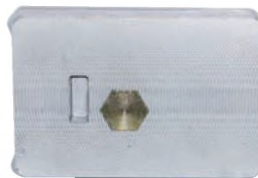
PATENT

Machine Stand

NEW



VSA-35K-PS-BL



VSA-35K-PS



VSA-35K-PS

- Base by machine cutting only
- No Rubber

VSA-35K-PS-BL

- Base by machine cutting only
- Longer thread rod durable for different/adjustable range on the ground & thicker washer.

- Leveling
- Reduce Vibration
- Increase Stability
- Frictionless
- Precision & Accurate

STEP

- Place shock absorbers under machine.
- When shock absorbers have full contact with machine base, you can start to adjust the leveling.

ORDER NO.	L x W x H	ADJ. THREAD LENGTH	LOAD kgs	UNEVEN GROUND ANGLE	RUBBER	ADJUSTMENT HEIGHT / FROM ADJUSTABLE SCREW	WEIGHT KGS	CODE NO.
VSA-35K-PS	145 x 95 x 134	M16 x 91L	6300	$\pm 5^\circ$		7 mm	1.4	7001-162
VSA-35K-PS-BL	145 x 95 x 144	M16 x 81L	6300	$\pm 5^\circ$		7 mm	1.4	7001-163



Shock Absorber

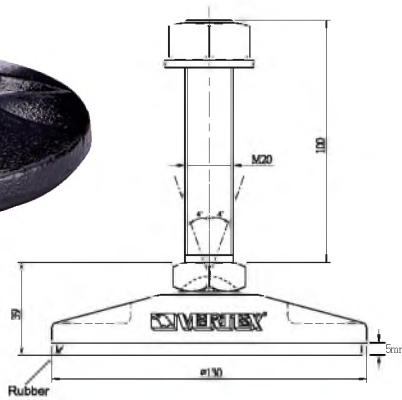
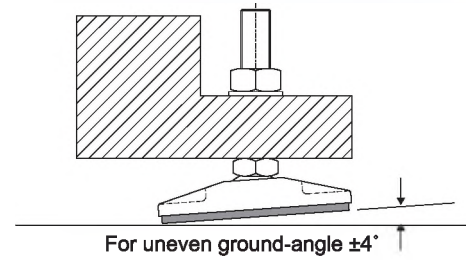
PATENT



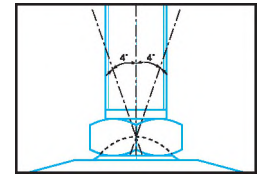
Machine Stand

NEW

FROM 20 KN TO 225 KN



- Leveling
- Reduce Vibration
- Increase Stability
- Frictionless
- Precision & Accurate
- Rubber : 80°, 5mm Thickness



STEP Machine Stand

- Place shock absorbers under machine.
- When shock absorbers have full contact with machine base, you can start to adjust the leveling.

ORDER NO.	L x W x H	THREAD	LOAD kgs	UNEVEN GROUND ANGLE	WEIGHT KGS	CODE NO.
VSA-25K	130 x 39 x 139	M20 x 100L	2200	±4°	1.76	7001-140