

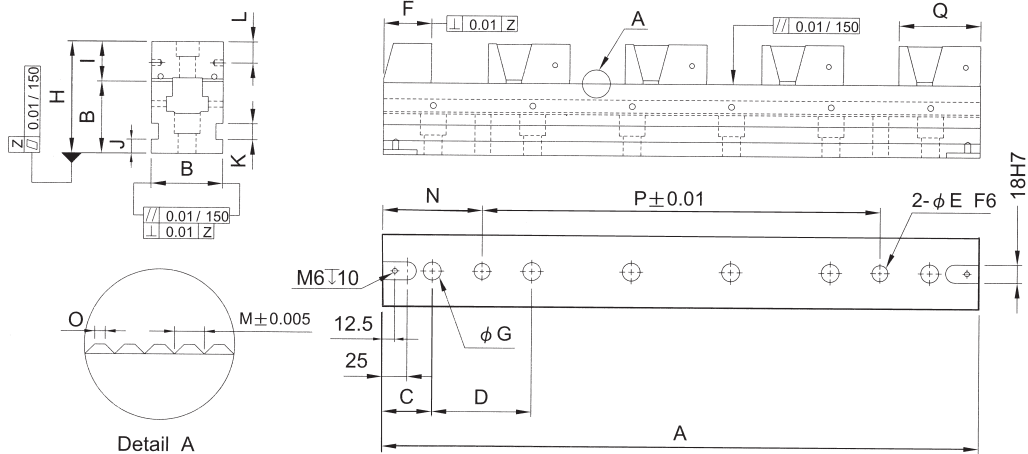


Flexible Line Up Vice



STANDARD STYLE

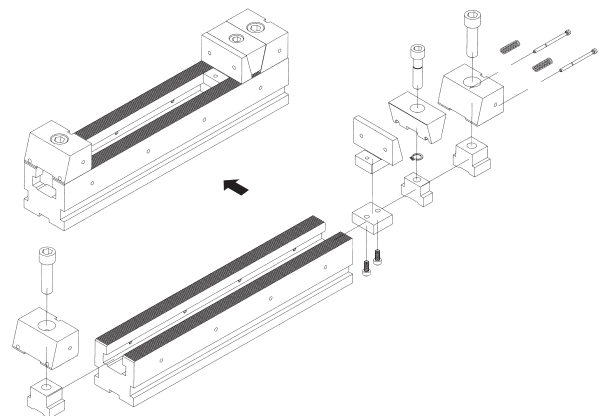
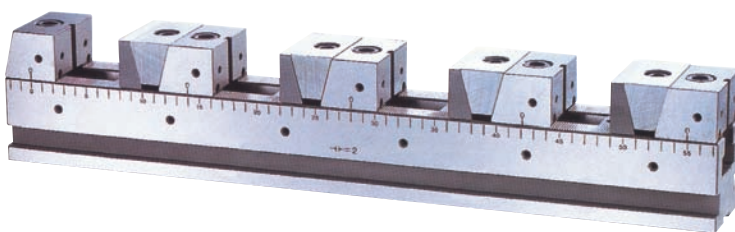
4 POSITION FOR EACH ITEM.



ORDER NO.	A	B ± 0.01	C	D	E	F	G	H	I	J	K	L	M	N	O	P	Q	KG	CODE NO.
VFS-5030	300	50	30	80	12	36	14	75	24.8	10	12	12.5	1.5	70	0.5	160	60	6.5	4007-050
VFS-5030G			50	100										100					100
VFS-5040	400	50	40	80	12	36	14	75	24.8	10	12	12.5	1.5	80	0.5	240	60	8.5	4007-052
VFS-5040G			50	100										100		200			4007-053
VFS-5050	500	50	50	80	12	36	14	75	24.8	10	12	12.5	1.5	90	0.5	320	60	10	4007-054
VFS-5050G				100										300		300			4007-055
VFS-5060	600	50	60	80	12	36	14	75	24.8	10	12	12.5	1.5	100	0.5	400	60	11.5	4007-056
VFS-5060G			50	100										100		4007-057			
VFS-5070	700	50	70	80	12	36	14	75	24.8	10	12	12.5	1.5	110	0.5	480	60	13	4007-058
VFS-5070G			50	100										100		500			4007-059
VFS-7240	400	72	50	100	16	48	18	110	39.7	14	16	21.3	2.0	100	0.7	200	82	19	4007-060
VFS-7250	500	72	50	100	16	48	18	110	39.7	14	16	21.3	2.0	100	0.7	300	82	25	4007-061
VFS-7260	600	72	50	100	16	48	18	110	39.7	14	16	21.3	2.0	100	0.7	400	82	27	4007-062
VFS-7270	700	72	50	100	16	48	18	110	39.7	14	16	21.3	2.0	100	0.7	500	82	30	4007-063

Material : tool steel

Hardness : over HRC55

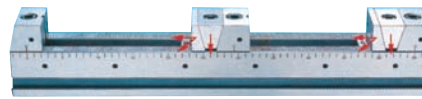




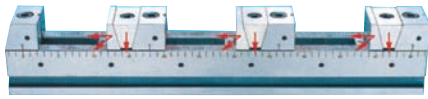
Flexible Line UP Vice



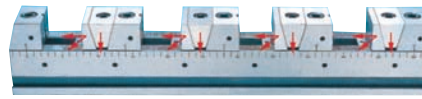
one workpieces



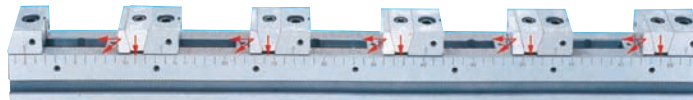
two workpieces



three workpieces



four workpieces

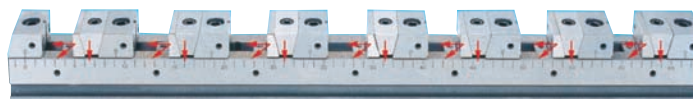


five workpieces

ONE WAY FIX JAW TYPE



six workpieces



seven workpieces

Maximum width of the workpieces can be clamped

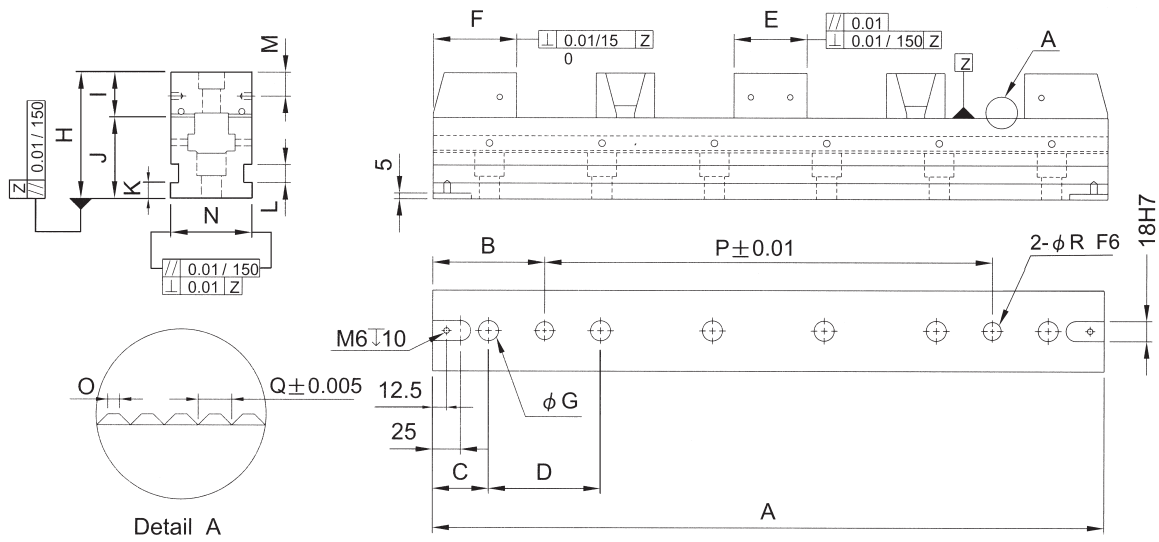
ORDER NO.	One workpiece	Two workpieces	Three workpieces	Four workpieces
VFS-5030	203	71	27	--
VFS-5040	303	121	60	30
VFS-5050	403	171	94	55
VFS-5060	503	221	127	80
VFS-5070	603	271	160	105
VFS-7240	269	93	35	--
VFS-7250	369	143	68	30
VFS-7260	469	193	101	55
VFS-7270	569	243	135	80

ORDER NO.	Five workpiece	Six workpiece	Seven workpiece	Eight workpiece	Nine workpiece
VFS-5030	--	--	--	--	--
VFS-5040	--	--	--	--	--
VFS-5050	32	16	--	--	--
VFS-5060	52	33	20	--	--
VFS-5070	72	50	34	22	13
VFS-7240	--	--	--	--	--
VFS-7250	--	--	--	--	--
VFS-7260	28	--	--	--	--
VFS-7270	48	26	--	--	--

Flexible Line UP Vice

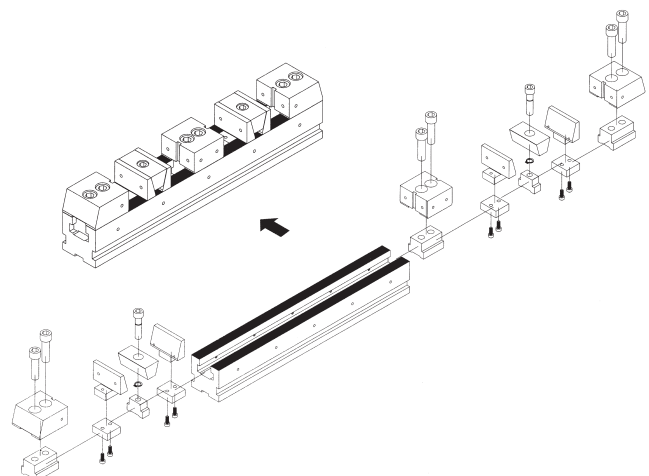
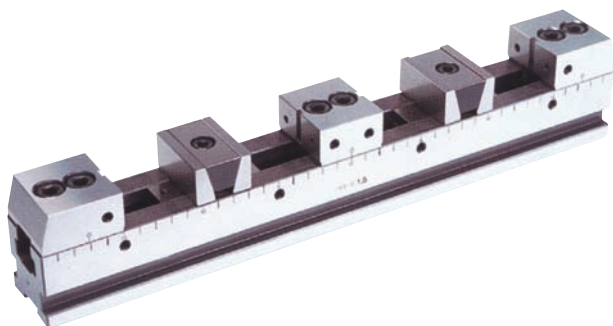


STANDARD STYLE
4 POSITION FOR EACH ITEM.



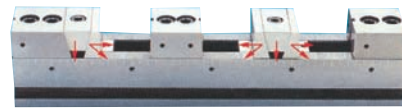
ORDER NO.	A	B	C	D	E	F	G	H	I	J	K	L	M	N	O	P	Q	R	KG	CODE NO.
VFL-5030	300	70	30	80	44	50	14	75	24.8	50	10	12	12.5	50	0.5	160	1.5	12	7	4007-080
VFL-5030G		100	50	100												100				4007-081
VFL-5040	400	80	40	80	44	50	14	75	24.8	50	10	12	12.5	50	0.5	240	1.5	12	7.6	4007-082
VFL-5040G		100	50	100												200				4007-083
VFL-5050	500	90	50	80	44	50	14	75	24.8	50	10	12	12.5	50	0.5	320	1.5	12	9	4007-084
VFL-5050G		100	50	100												300				4007-085
VFL-5060	600	100	60	80	44	50	14	75	24.8	55	10	12	12.5	50	0.5	400	1.5	12	11	4007-086
VFL-5060G		50	100	4007-087																
VFL-5070	700	110	70	80	44	50	14	75	24.8	50	10	12	12.5	50	0.5	480	1.5	12	12	4007-088
VFL-5070G		100	50	100												500				4007-089
VFL-7240	400	100	50	100	65	75	18	110	39.7	72	14	16	21.3	72	0.7	200	2.0	16	19	4007-090
VFL-7250	500	100	50	100	65	75	18	110	39.7	72	14	16	21.3	72	0.7	300	2.0	16	27	4007-091
VFL-7260	600	100	50	100	65	75	18	110	39.7	72	14	16	21.3	72	0.7	400	2.0	16	25	4007-092
VFL-7270	700	100	50	100	65	75	18	110	39.7	72	14	16	21.3	72	0.7	500	2.0	16	27.5	4007-093

Material: tool steel
Hardness: over HRC55

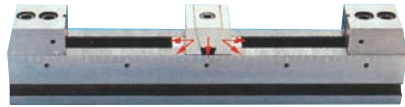




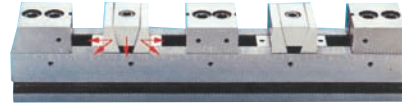
one workpieces



three workpieces



two workpieces



four workpieces



five workpieces

TOW WAY FIX JAW TYPE



six workpieces



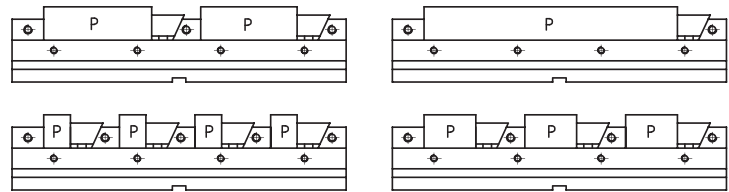
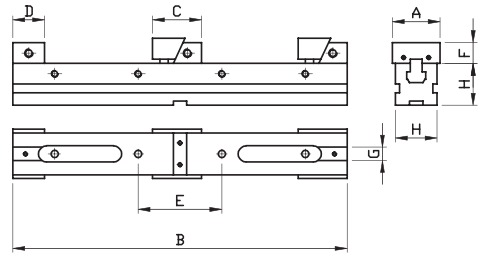
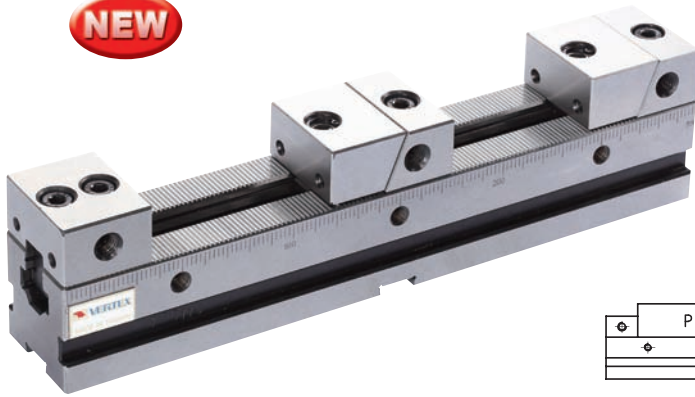
seven workpieces

Maximum width of the workpieces can be clamped

ORDER NO.	One workpiece	Two workpieces	Three workpieces	Four workpieces	Five workpieces
VFL-5030	176	82	32	21	--
VFL-5040	276	132	65	46	23
VFL-5050	376	182	98	71	43
VFL-5060	476	232	132	96	63
VFL-7240	217	100	33	20	--
VFL-7250	317	150	65	45	16
VFL-7260	417	200	100	70	36
VFL-7270	517	250	133	95	56

ORDER NO.	Six workpiece	Seven workpieces	Eight workpieces	Nine workpieces	Ten workpieces	Eleven workpieces
VFL-5030	--	--	--	--	--	--
VFL-5040	17	--	--	--	--	--
VFL-5050	34	19	15	--	--	--
VFL-5060	50	33	28	17	14	--
VFL-7240	--	--	--	--	--	--
VFL-7250	--	--	--	--	--	--
VFL-7260	27	--	--	--	--	--
VFL-7270	44	23	18	--	--	--

NEW



ORDER NO.	B	H	A	C	D	E	F	G	1P	2P	3P	4P	KGS	SCREW	CODE NO.
VFN-6030	300	50	59	55~58	38	100	25	16	208	75	30	8	7	M8	4007-131
VFN-6040	400								305	125	64	33	9		4007-132
VFN-6050	500								408	175	96	58	10		4007-133
VFN-6060	600								508	225	129	83	12		4007-134
VFN-6070	700								608	275	162	108	14		4007-135
VFN-8540	400	75	84	70~75	50	40	40	16	275	100	41	12	22	M10	4007-136
VFN-8550	500								375	150	75	37	26		4007-137
VFN-8560	600								475	200	108	62	30		4007-138
VFN-8570	700								575	250	141	87	33		4007-139
VFN-8580	800								675	300	174	102	37		4007-140

Maximum width of the workpieces can be clamped

ORDER NO.	One workpiece	Two workpieces	Three workpieces	Four workpieces
	1P	2P	3P	4P
VFN-6030	208	75	30	8
VFN-6040	305	125	64	33
VFN-6050	408	175	96	58
VFN-6060	508	225	129	83
VFN-6070	608	275	162	108
VFN-8540	275	100	41	12
VFN-8550	375	150	75	37
VFN-8560	475	200	108	62
VFN-8570	575	250	141	87
VFN-8580	675	300	174	102