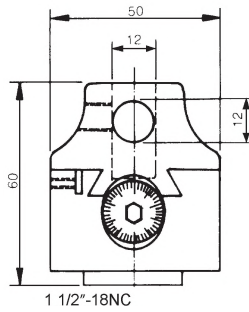




ORDER NO. VBC-2



1 SCALE 0.01 mm
0.02 mm per Ø

Here is a small head that will be in constant demand in any shop.

Note the wide base bearing surface that assures maximum rigidity even when the bar holder is in an off-set position. This wide base design is a recent Criterion innovation that increases bearing surfaces by 50% over the older models.

A 1/2" double hole bar holder with a 1/2" cross hole is available.

The unit has a 1 1/2"-18NC threaded back and also features a direct reading dial screw.

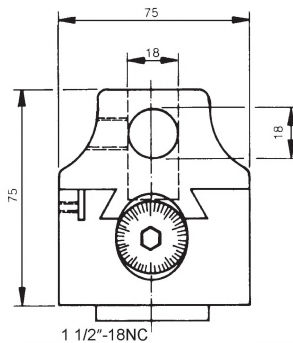
SPECIFICATION

BORING CAPACITY Ø10-Ø100

ORDER NO.	ACTUAL SIZE	OVERALL LENGTH	BORING BAR HOLE SIZE	CENTER DIST BETWEEN HOLES.	CROSS HOLE DIA	OFFSET	WEIGHT (kg)	CODE NO.
VBC-2(l)	2" Dia.	2-7/16"	1/2"	5/8"	1/2"	5/8"	0.7	3401-301
VBC-2(m)	50	62	12	15	12	15	0.8	3401-302



ORDER NO. VBC-3



1 SCALE 0.01 mm
0.02 mm per Ø

Here is a sturdy unit of extended boring range, capable of peeling off heavy roughing cuts as well tool of extreme sensitivity. The use of a wide-base bar-holder resting securely on the body, eliminates the need for a separate side plate. You will notice it has now become an integral part of the body.

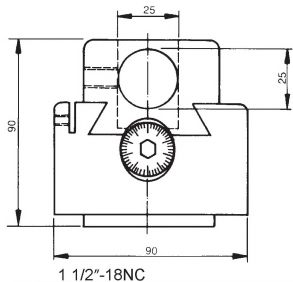
The direct reading adjusting screw is ground after hardening and a plainly marked dial face in non-reflecting satin chrome allows easy reading and adjustments of .0005 or less.

All Criterion Boring Heads have threaded backs for use with a variety of shanks. This model takes a 1-1/2"-18NC threaded shank.

SPECIFICATION

BORING CAPACITY Ø10-Ø220

ORDER NO.	ACTUAL SIZE	OVERALL LENGTH	BORING BAR HOLE SIZE	CENTER DIST BETWEEN HOLES.	CROSS HOLE DIA	OFFSET	WEIGHT (kg)	CODE NO.
VBC-3(l)	3" Dia.	3.5/32"	3/4"	15/16"	3/4"	1"	2	3401-303
VBC-3(m)	75	80	18	23	18	25	2	3401-304



1 SCALE 0.01 mm
0.02 mm per Ø

This is a bigger boring head which can be put on large machine to process more as you want. The radius of boring hole can reach on about Ø 400mm long by a boring bar of 160mm.

All Criterion Boring Heads have threaded backs for use with a variety of shanks. This model takes a 1-1/2"-18NC threaded shank.

SPECIFICATION

BORING CAPACITY Ø10-Ø250

ORDER NO.	ACTUAL SIZE	OVERALL LENGTH	BORING BAR HOLE SIZE	CENTER DIST BETWEEN HOLES.	CROSS HOLE DIA	OFFSET	WEIGHT (kg)	CODE NO.
VBC-4(l)	4" Dia.	3-1/2"	1"	1-1/4"	1"	1"	4	3401-305
VBC-4(m)	100	90	25	32	25	25	4	3401-306