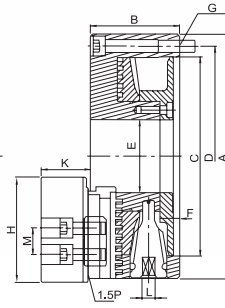
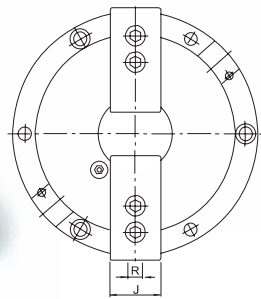


2-Jaw Steel Body Chucks



Steel Body Chucks Series



Steel Body Chucks:

- Hard jaws and soft jaws can be adjusted just like on a Hydraulic power Chuck to increase the gripping range.
- Hard jaws as well as Soft jaws are interchangeable with those of CNC Lathes.
- Can be used as a "Forming plate" for machining soft Jaws.
- The Chuck Handle can be operated easily and smoothly.
- Chuck Body is made by steel to enhance safety operations for high speed machining.

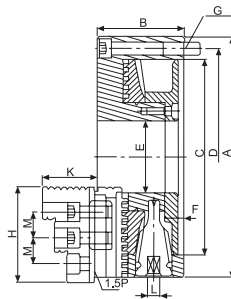
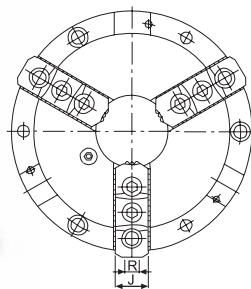
SPECIFICATIONS

Unit:mm

ORDER NO.	A	B	C	D	E	F	G	H	J	K	L	M	R	Gross Weight (kgs)	Max. Speed (r.p.m.)	Max. Gripping Diameter		CODE NO.
																O.D. Clamping	I.D. Clamping	
VTNT-07	193	78	155	172	58	5	3-M10	90	42	44	11	20	12	15.8	3200	Ø8~Ø235	Ø66~Ø235	5005-031
VTNT-09	233	85	190	210	70	6	3-M12	100	48	47	12	25	14	24.5	2800	Ø11~Ø280	Ø85~Ø280	5005-032

3-Jaw Steel Body Chucks

Steel Body Chucks Series



Steel Body Chucks:

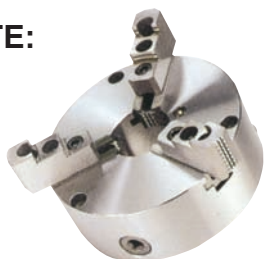
- Chuck Body is made by steel to enhance safety operations for high speed machining.
- Hard jaws as well as Soft jaws are interchangeable with those of CNC Lathes.
- The Chuck Handle can be operated easily and smoothly.
- Can be used as a "Forming plate" for machining soft jaws.
- Hard jaws and soft jaws can be adjusted just like on a Hydraulic power Chuck to increase the gripping range.

SPECIFICATIONS

Unit:mm

ORDER NO.	A	B	C	D	E	F	G	H	J	K	L	M	R	Gross Weight (kgs)	Max. Speed (r.p.m.)	Max. Gripping Diameter		CODE NO.
																O.D. Clamping	I.D. Clamping	
VNT-07	193	78	155	172	58	5	3-M10	78	28	46	11	20	12	14.8	3200	Ø8~Ø235	Ø66~Ø235	5005-040
VNT-09	233	85	190	210	70	6	3-M12	92	32	53	12	25	14	23.4	2800	Ø11~Ø280	Ø85~Ø280	5005-041
VNT-10	273	91	230	250	89	6	3-M12	104	37	56	12	30	16	32	2400	Ø12~Ø330	Ø92~Ø330	5005-042
VNT-12	310	104	260	285	105	7	3-M12	118	47	67	14	30	21	46	2100	Ø15~Ø370	Ø104~Ø370	5005-043

ILLUSTRATE:



Can for more large capacity.



The hard jaw & soft jaw is same as hydraulic power chuck

