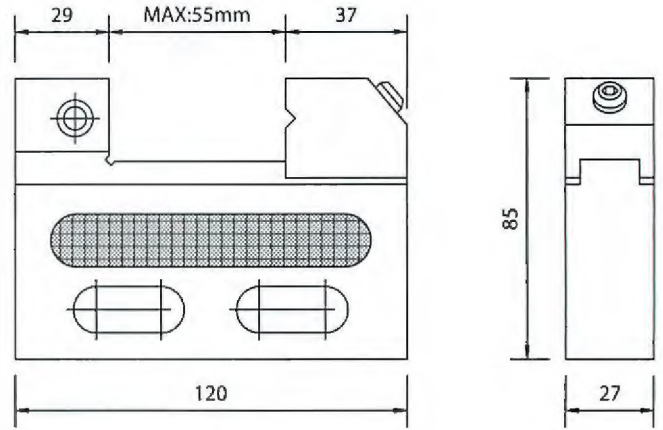


# EDM Tool Marker Vise (STAINLESS) VERTEX®



Material: SUS 440  
 Hardness: HRC 58°~60°  
 Squareness: Within 0.005 mm

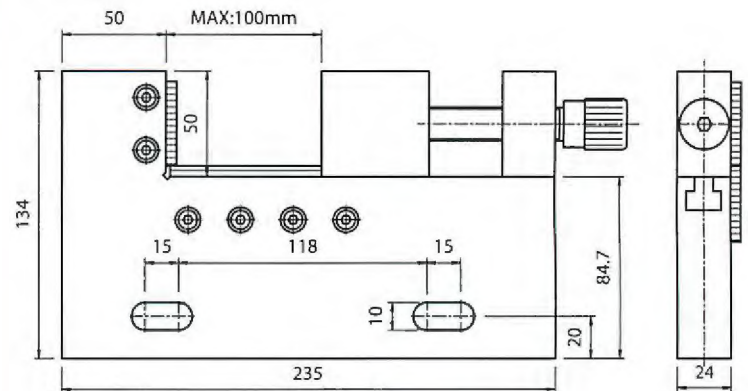
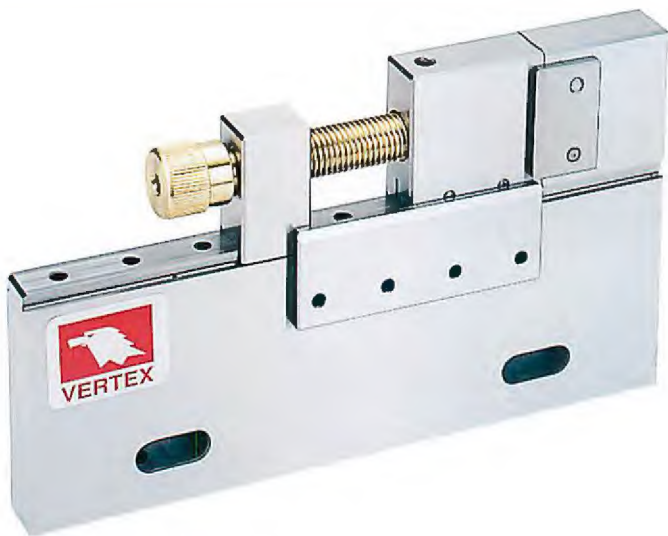
This vise is for wire cutter use. Each of the parts was manufactured by stainless steel and with the appliance of high erosion resisting.

※ Not 100% magnetic proof

|             |                    |          |
|-------------|--------------------|----------|
| PARALLELISM | ±0.002 mm / 100 mm |          |
| SQUARENESS  | ±0.002 mm / 100 mm |          |
| ORDER NO.   | WEIGHT (kgs)       | CODE NO. |
| VSTV-50W    | 1.4                | 2008-040 |

|              |            |
|--------------|------------|
| MAX. OPENING | 55 mm      |
| THICKNESS    | 27 mm      |
| JAW DEEP     | 25 mm      |
| N.W          | 1.01 kgs   |
| MATERIAL     | SUS 440    |
| HARDNESS     | HRC 54°±2° |

# EDM Tool Maker Vise (STAINLESS)



● Do not over lock.

※ Not 100% magnetic proof

|             |                    |          |
|-------------|--------------------|----------|
| PARALLELISM | ±0.002 mm / 100 mm |          |
| SQUARENESS  | ±0.002 mm / 100 mm |          |
| ORDER NO.   | WEIGHT (kgs)       | CODE NO. |
| VSTV-100W   | 4.88               | 2008-050 |

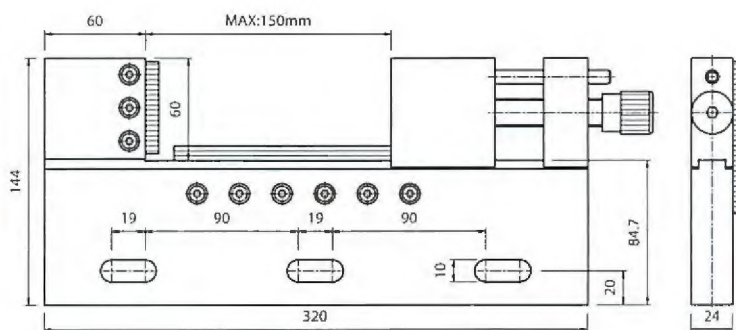
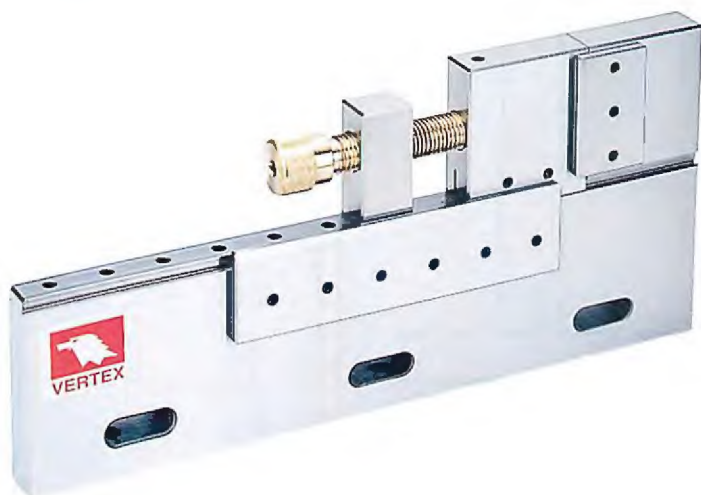
|              |            |
|--------------|------------|
| MAX. OPENING | 100 mm     |
| THICKNESS    | 24 mm      |
| JAW DEEP     | 50 mm      |
| N.W          | 4.88 kgs   |
| MATERIAL     | SUS420     |
| HARDNESS     | HRC 54°±2° |



# EDM Tool Marker Vise (STAINLESS)



# VERTEX®



- Do not over lock.
- ✘ Not 100% magnetic proof

|             |                    |          |
|-------------|--------------------|----------|
| PARALLELISM | ±0.002 mm / 100 mm |          |
| SQUARENESS  | ±0.002 mm / 100 mm |          |
| ORDER NO.   | WEIGHT (kgs)       | CODE NO. |
| VSTV-150W   | 6.75               | 2008-060 |

|             |                        |
|-------------|------------------------|
| MAX.OPENING | 150 mm                 |
| THICKNESS   | 24 mm                  |
| JAW DEEP    | 60 mm                  |
| N.W         | 6.75 kgs               |
| MATERIAL    | SUS420                 |
| HARDNESS    | HRC 54 <sup>±2</sup> ° |

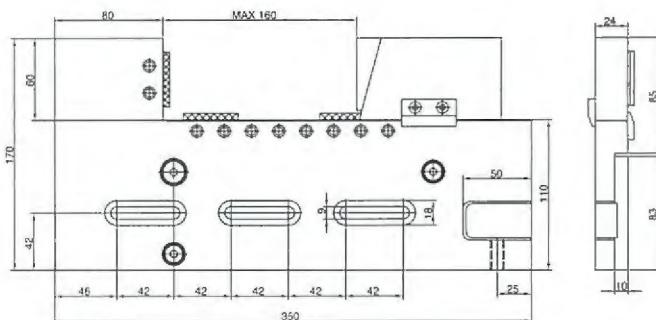
EDM TOOL MARKER VISE



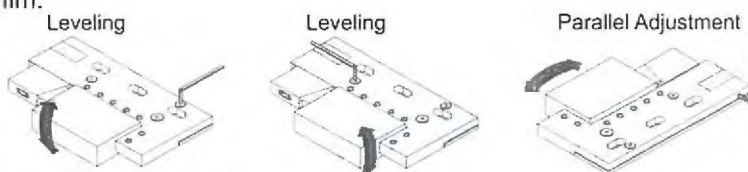
# EDM Tool Maker Vise (STAINLESS)



- Over lock may break vise.
- ✘ Not 100% magnetic proof



- Parallelism: 0.003 / 100 mm, Squareness: 0.005 / 100 mm.
- Hardness: up to HRC 45°~55°.
- The vise can be adjusted up and down, left and right, forth and back to set parallelism.
- High water pressure resistance.



|             |                    |          |
|-------------|--------------------|----------|
| PARALLELISM | ±0.003 mm / 100 mm |          |
| SQUARENESS  | ±0.005 mm / 100 mm |          |
| ORDER NO.   | WEIGHT (kgs)       | CODE NO. |
| VSTV-320W   | 8                  | 2008-090 |

|             |                        |
|-------------|------------------------|
| MAX.OPENING | 160 mm                 |
| THICKNESS   | 24 mm                  |
| JAW DEEP    | 60 mm                  |
| N.W         | 8 kgs                  |
| MATERIAL    | STAVAX                 |
| HARDNESS    | HRC 52 <sup>±2</sup> ° |



# Electro Vise (STAINLESS)

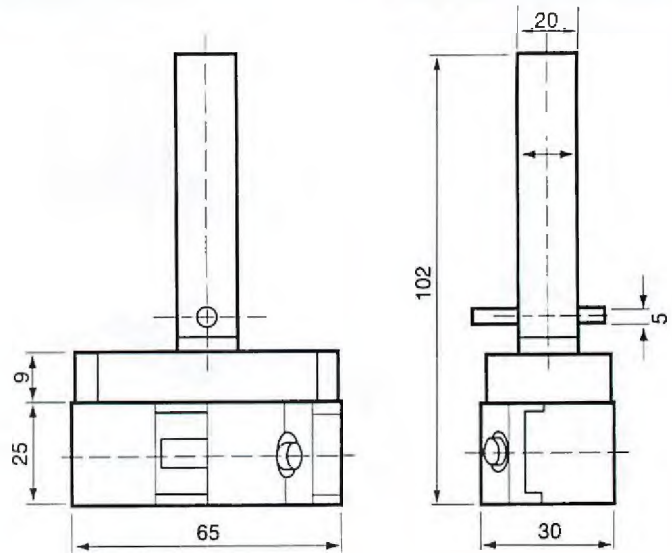


VERTEX®  
(STAINLESS)FOR EDM

MINI TYPE

JAW OPENING 20mm

JAW WIDTH 25mm



※ Not 100% magnetic proof

| Material         | SUS440                   |
|------------------|--------------------------|
| Parallelism      | within 0.003 mm / 100 mm |
| Squareness       | within 0.005 mm / 100 mm |
| Harden treatment | up to HRC 58°            |

| ORDER NO. | MATERIAL | LENGHT | WIDTH | JAW OPENING | JAW HEIGHT | HARDEN  | WEIGHT (kgs) | CODE NO. |
|-----------|----------|--------|-------|-------------|------------|---------|--------------|----------|
| VEH-20MS  | SUS440   | 65     | 25    | 20          | 10         | HRC 58° | 0.7          | 2008-020 |

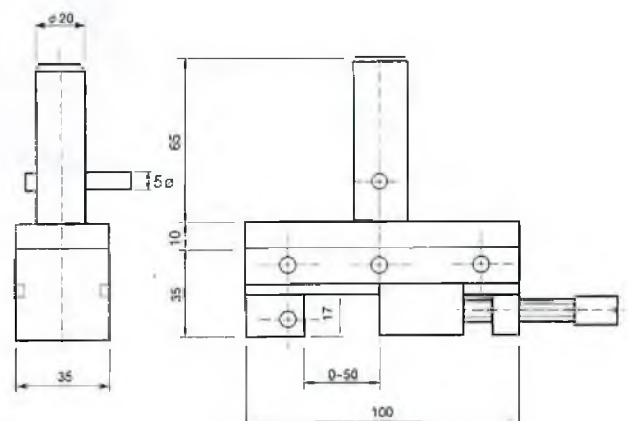


# Electro Vise (STAINLESS)

(STAINLESS)FOR EDM

JAW WIDTH 25mm

JAW OPENING 50mm



※ Not 100% magnetic proof

| Material         | SUS440                   |
|------------------|--------------------------|
| Parallelism      | within 0.003 mm / 100 mm |
| Squareness       | within 0.005 mm / 100 mm |
| Harden treatment | up to HRC 58°            |

| ORDER NO. | MATERIAL | LENGHT | WIDTH | JAW OPENING | JAW HEIGHT | HARDEN  | WEIGHT (kgs) | CODE NO. |
|-----------|----------|--------|-------|-------------|------------|---------|--------------|----------|
| VEH-20DS  | SUS440   | 100    | 35    | 50          | 17         | HRC 58° | 1.3          | 2008-030 |