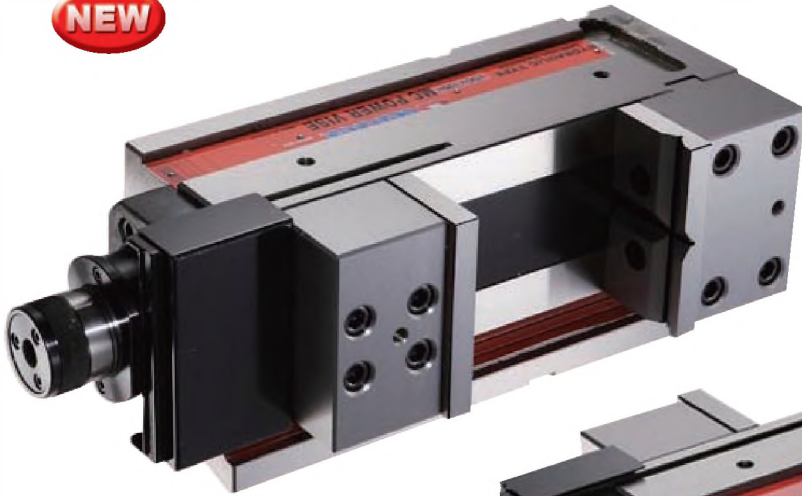




PATENT

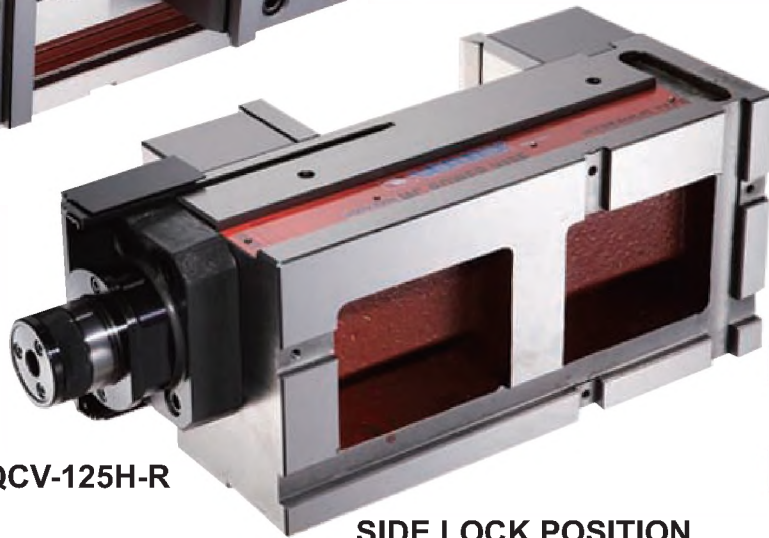
NEW



VQCV-125H-L

NEW

A GOOD POWERFUL CLAMPING WAY FOR SIDELOCK & STANDING POSITION & HEAVY CUTTING.



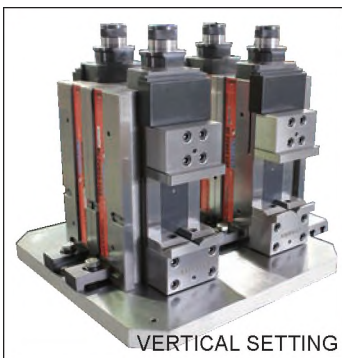
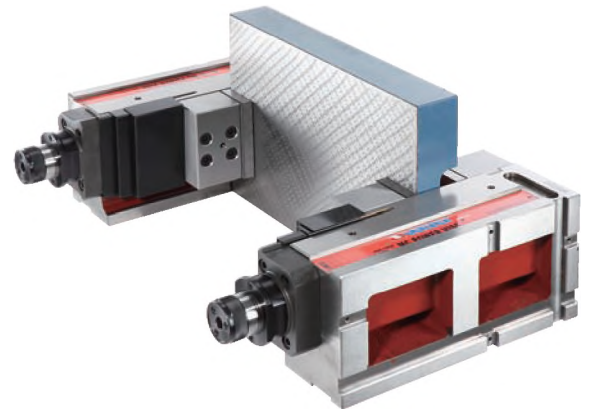
VQCV-125H-R

SIDE LOCK POSITION

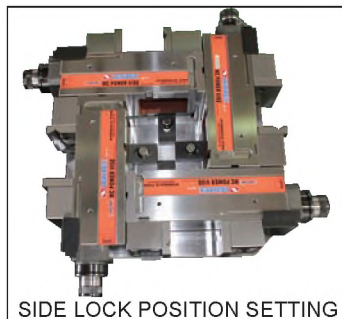


Features

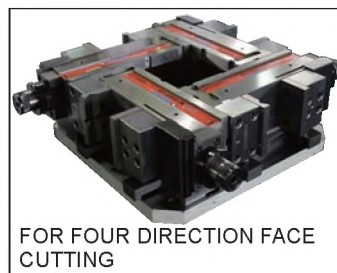
- Multiple purpose.
- Fast & Horizontal & Side setting. Heavy Duty.
- Firm & Rigid & Accurate.
- Unique design allows processing being easier.
- Fast : 2 location setting slots for locating key.
- Dust-proof : concealed spindle.
- Engraved cross shaped jaw for flat & round workpiece.
- All Parts are inter - changeable with VQC-series.
- Hydro line - one scale indicate about 1/3 of the max. clamp force.



VERTICAL SETTING



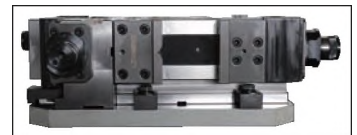
SIDE LOCK POSITION SETTING



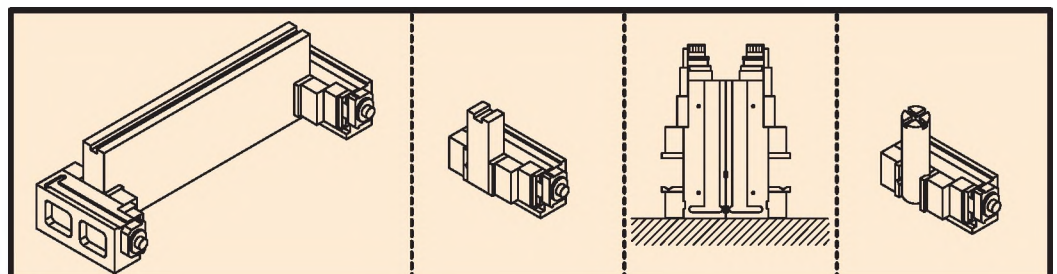
FOR FOUR DIRECTION FACE CUTTING

BACK TO BACK ALIGNMENT

- Strong & Stable
- Fast Setting



NEW DESIGN FOR BETTER CLAMPING WAY





Universal MC Power Vise



PATENT

NEW

BEST FOR VERTICAL SETTING

MC POWER VISE



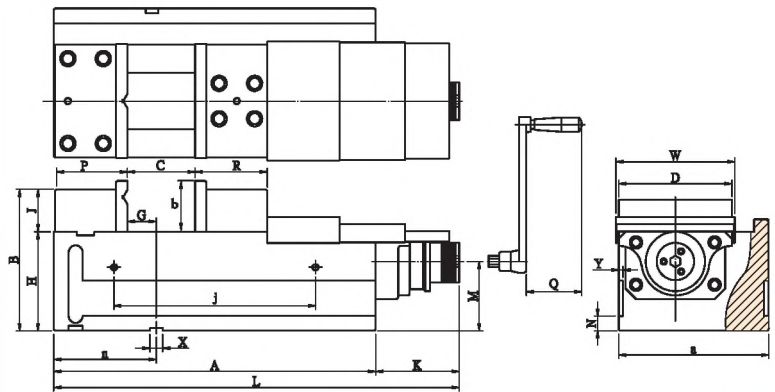
VQCV-125H-R



VQCV-125H-L



DIMENSION DIAGRAM



HORIZONTAL VERTICAL POSITION



● Strong Vertical Clamping

- HYDRO-BOOSTER** (Icon: cylinder with arrows)
- SAME HEIGHT MULTIPLE USING** (Icon: three blocks of equal height)
- ACCURACY GUARANTEE** (Icon: vertical lines with text: 0.01/100 MM 0.02/50)
- TABLE HARDNESS** (Icon: hammer on a block)
- BENDING PROOF** (Icon: bent bar)
- MECHANICAL** (Icon: bolt and nut)
- patent PAT.** (Icon: patent symbol)



L LEFT HAND , R IS RIGHT HAND

ORDER NO.	CODE NO.
VQCV-125H - L	4005-091
VQCV-125H - R	4005-092
VQCV-160H - L	4005-093
VQCV-160H - R	4005-094

ORDER NO.	JAW b	JAW Open C	B	MAX. Clamping Force(8#KN)	G.W. kg
VQCV-125H- L/R	72	165	180	40	53
VQCV-160H- L/R	72	235	200	60	85

ORDER NO.	A	B	a	D	P	R	G	H	J	K
VQCV-125H- L/R	364	180	177	125	94	90	43	120	60	113.5
VQCV-160H- L/R	455	200	212	160	102	102	42	140	60	125.5

ORDER NO.	L	M	N	Q	W	X	Y	C OPEN	j	n
VQCV-125H- L/R	477.5	85	21	73	135	18	7	162	215	139
VQCV-160H- L/R	580.5	98	21	93	170	18	7	235	285	145