



Universal Jaws With Soft Stopper

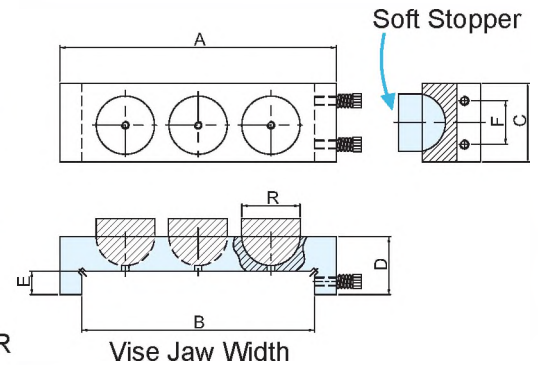


SOFT JAW

NEW



SOFT STOPPER



- The soft stopper can for cutting short, cutting shape, cutting taper.....etc.
- Semi-sphere ball enables down press force.
- For irregular workpiece.
- Easy setting, put on the moving jaw. B is vise jaw width.



ORDER NO.	A	B	C	D	R	WEIGHT kgs	CODE NO.
VWSJ-R100	145	100-110mm	49	38	40		1002-174
VWSJ-R130	175	125-140mm	49	39	40		1002-175
VWSJ-R160	190	150-160mm	54	40	40		1002-176
VWSJ-R200	245	200-210mm	76	42	40		1002-177



Universal Vise Jaws With Work Stopper



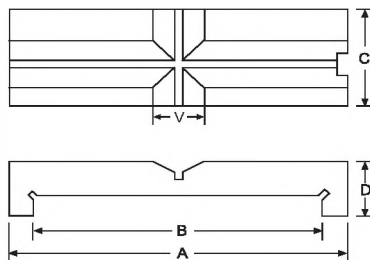
For Fixed On The Vise Jaw

- 4 FOR THE JAW WIDTH 100-110mm
- 5 FOR THE JAW WIDTH 125-140mm
- 6 FOR THE JAW WIDTH 150-160mm
- 8 FOR THE JAW WIDTH 200-210mm

Extension clamping capacity:
vise jaw width 30-45mm
vise jaw height 7-15mm

ORDER NO. VWSJ-4, 5, 6, 8

- Can be fixed on any vise jaw by the two screws on the side.
- One jaw in multiple- function features.
- V-type jaw can fix round workpiece at horizontal and vertical position.
- Can be performed as work stopper.
- Quick, save your time.



ORDER NO.

VWSJ-□—— VISE JAW SIZE

V CLAMPING CAPACITY	
HORIZONTAL V	VERTICAL V
Ø50	Ø60
Ø50	Ø60
Ø60	Ø60
Ø80	Ø80



ORDER NO.	A	B	C	D	V	WEIGHT kgs	CODE NO.
VWSJ-4	145	110	49	38	32	1.6	1002-170
VWSJ-5	175	140	49	39	32	1.7	1002-171
VWSJ-6	190	160	53	40	32	2	1002-172
VWSJ-8	245	210	76	42	32	4.2	1002-173



ORDER NO.
 VWS-VK-4.5.6.8
 VWS-VA-4.5.6.8
 VWS-VH-4.5.6.8
 VWS-VJ-400.500.600
 VWS-VW-3.4.5
 VWS-VMC-4.6
 VWS-VQS-3.4.5

V CLAMPING CAPACITY	
HORIZONTAL V	VERTICAL V
Ø25	Ø25
Ø25	Ø25
Ø30	Ø30
Ø40	Ø40

ORDER NO.	kgs	CODE NO.
VWS-VK-4	0.26kg	1002-110
VWS-VK-5	0.36kg	1002-111
VWS-VK-6	0.46kg	1002-112
VWS-VK-8	1.16kg	1002-113

ORDER NO.	kgs	CODE NO.
VWS-VW-3	0.21kg	1002-120
VWS-VW-4	0.36kg	1002-121
VWS-VW-5	0.44kg	1002-122

ORDER NO.	kgs	CODE NO.
VWS-VA-4	0.4kg	1002-130
VWS-VA-5	0.51kg	1002-131
VWS-VA-6	0.96kg	1002-132
VWS-VA-8	1.76kg	1002-133

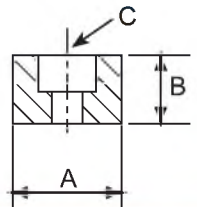
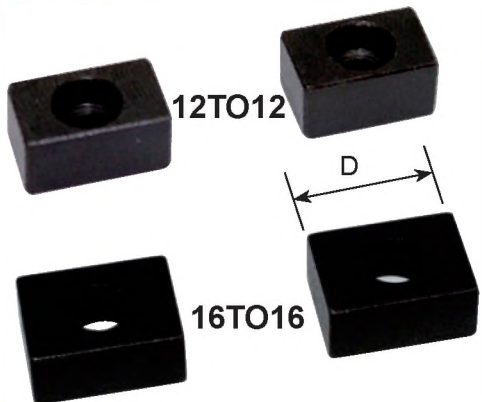
ORDER NO.	kgs	CODE NO.
VWS-VMC-4	0.35kg	1002-140
VWS-VMC-6	0.4kg	1002-141

ORDER NO.	kgs	CODE NO.
VWS-VJ-400	0.36kg	1002-163
VWS-VJ-500	0.58kg	1002-164
VWS-VJ-600	0.9kg	1002-165

ORDER NO.	kgs	CODE NO.
VWS-VH-4	0.44kg	1002-150
VWS-VH-5	0.70kg	1002-151
VWS-VH-6	0.88kg	1002-152
VWS-VH-8	1.78kg	1002-153

ORDER NO.	kgs	CODE NO.
VWS-VQS-3	0.3kg	1002-160
VWS-VQS-4	0.42kg	1002-161
VWS-VQS-5	0.51kg	1002-162

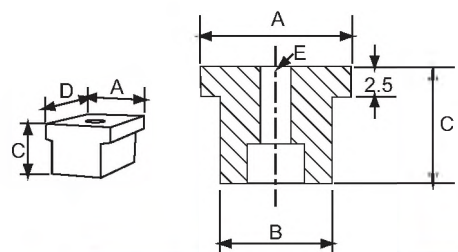
 Thread Rod Guide Block



- For quick vise setup
- Multi - Purpose
- 4 PCS / SETS
- Match vise with Machine table slot
- Material: S45C

ORDER NO.	A	-0.01 -0.08	B	C For	D	WEIGHT kgs	CODE NO.
12TO12	12		10	M4	20	0.07	1002-370
14TO14	14		10	M5	20	0.07	1002-371
16TO16	16		10	M6	22	0.09	1002-372
18TO18	18		12	M6	22	0.13	1002-373
20TO20	20		12	M6	24	0.20	1002-374

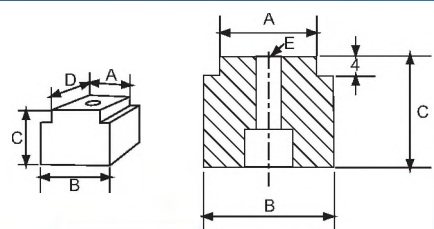
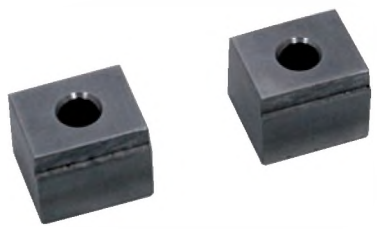
 Thread Rod Guide Block



- For quick vise setup
- Multi - Purpose
- 4 PCS / SETS
- Material: S45C

ORDER NO.	A	-0.01 -0.08	B	-0.01 -0.08	C	D	E	WEIGHT kgs	CODE NO.
16TO14	16		14		14	20	M6	0.10	1002-350
18TO14	18		14		16	20	M6	0.12	1002-351
18TO16	18		16		16	20	M6	0.13	1002-352

 Thread Rod Guide Block



- For quick vise setup
- Multi - Purpose
- 4 PCS / SETS
- Material: S45C

ORDER NO.	A	-0.01 -0.08	B	-0.01 -0.08	C	D	E	WEIGHT kgs	CODE NO.
14TO16	14		16		14	20	M6	0.12	1002-361
14TO18	14		18		16	20	M6	0.13	1002-362
16TO18	16		18		16	20	M6	0.15	1002-363