



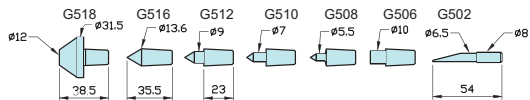
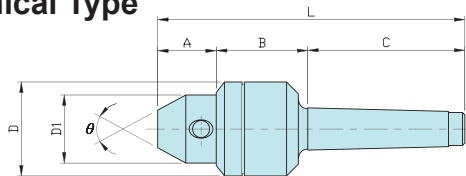
Inter-Changeable Point Rolling Center



VERTEX®

Economical Type

NEW



- 7 points / set
- Concentricity : $\pm 0.008\text{mm}$
- With high grade bearing

※Suggested tailstock pressure under 6 kg/cm^2

Unit:mm

ORDER NO.	TYPE	A	B	C	D	D1	L	Accuracy	Speed Max R.P.M.	θ	G.W. Weight Kgs	CODE NO.
VLC-612	MT2	24	39	69	40	29	132	0.005	1800	60°	0.85	5001-121
VLC-613	MT3	24	43	91	46	30	158	0.005	1600	60°	1.1	5001-122
VLC-614	MT4	24	44	107	48	32	175	0.005	1600	60°	1.4	5001-123
VLC-615	MT5	25	64	138	63.5	35	227	0.005	1000	60°	3.8	5001-124