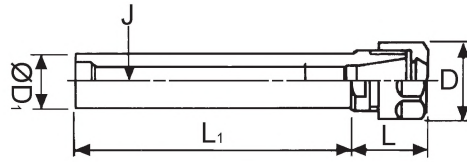


ER Spring Collet Chuck System

Collet Holders With Straight Shank

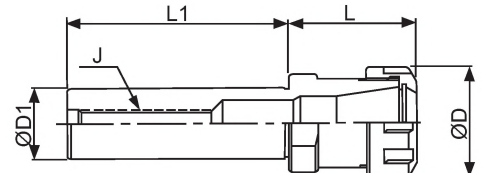
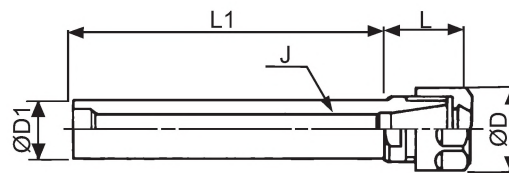
DIN6499 STRAIGHT SHANK



METRIC SIZE

ORDER NO.	COLLET TYPE	SHANK D1XL1	L	D	J	KGS	CODE NO.
V-530	ER11	Ø16X50	21	19	M6	0.1	3007-300
V-531		Ø16X100	21	19	M6	0.2	3007-311
V-532		Ø16X150	21	19	M6	0.3	3007-312
V-501A	ER16	Ø16X100	21	28	M10	0.3	3003-301A
V-501	ER16	Ø20X50	30	28	M10	0.2	3003-301
V-502		Ø20X100	30	28	M10	0.3	3003-302
V-503		Ø20X150	30	28	M10	0.4	3003-303
V-504	ER16	Ø25X100	30	28	M10	0.5	3003-304
V-504A		Ø25X50	30	28	M10	0.3	3003-306
V-505		Ø25X150	30	28	M10	0.7	3003-305
V-505A		Ø25X200	30	28	M10	0.5	3003-307
V-506	ER20	Ø20X50	36	34	M12	0.3	3004-301
V-507		Ø20X100	36	34	M12	0.3	3004-302
V-508		Ø20X150	36	34	M10	0.5	3004-303
V-509	ER20	Ø25X150	36	34	M10	0.7	3004-304
V-509A		Ø25X100	36	34	M12	0.5	3004-305
V-509B		Ø25X50	36	34	M12	0.3	3004-306
V-510	ER25	Ø20X50	46	42	M12	0.4	3005-301
V-511		Ø20X100	46	42	M12	0.5	3005-302
V-512		Ø20X150	46	42	M12	0.6	3005-303
V-513	ER25	Ø25X100	46	42	M12	0.6	3005-304
V-514		Ø25X150	46	42	M12	0.7	3005-305
V-515		Ø32X60	46	42	M12	0.6	3005-306
V-516	ER32	Ø25X80	54	50	M12	0.8	3006-301
V-517		Ø32X100	54	50	M12	1.1	3006-302
V-517A		Ø32X150	54	50	M12	1.5	3006-305
V-518		Ø40X100	54	50	M12	1.4	3006-303
V-523	ER40	Ø32X100	55	63	M16	1.5	3007-302
V-524		Ø40X100	55	63	M16	1.8	3007-303

 With Flat Shank



INCH SIZE

ORDER NO.	COLLET TYPE	SHANK D1XL1	L	D	J	KGS	CODE NO.
V-571	ER16	ST 5/8" X 4"	36	28	3/8"-16	0.2	3003-320
V-572		ST 3/4" X 4"	32			0.24	3003-321
V-573		ST 3/4" X 6"	32			0.32	3003-322
V-574		ST 1" X 4"	32			0.35	3003-323
V-575	ER20	ST 3/4" X 4"	34	34	3/8"-16	0.25	3004-320
V-576		ST 3/4" X 6"	34			0.33	3004-321
V-577		ST 1" X 4"	34			M12	0.36
V-578	ER32	ST 1" X 3"	58	50	M12	0.5	3006-320
V-579		ST 1 1/4" X 4"	58			0.6	3006-321