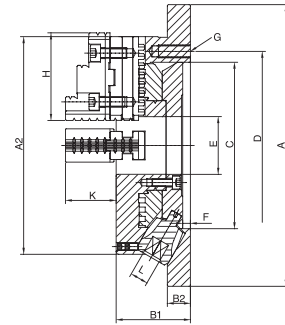
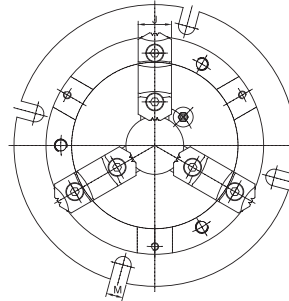


# Super Thin Chucks



- The angle between "HANDLE" AND "BASE OF CHUCK" is 30° degree, There Fore, it is much more convenient for "HANDLE" rotation.
- This "POWER SUPER THIN" design of chuck may increase the "allowable length" of machining operation.
- The flanged type design make it easily for loading and unloading operation. Four locate position 90°.
- "POWERFUL TYPE" design.

## SPECIFICATIONS

Unit:mm

ORDER NO.	Dim														Gripping Force (kgf)	Weight (kgs)	Gripping Range		CODE NO.
	A1	A2	B1	B2	C	D	E	F	G	H	J	K	L	M			O.D. Range	I.D. Range	
VNBK-6	220	170	58	18	130	147	45	6	3-M10	68	26	40	10	13	1800	12.4	Ø8-160	Ø48-150	5002-070
VNBK-8	270	210	65	20	155	172	60	6	3-M10	82	28	43	11	13	2250	20.2	Ø11-200	Ø62-190	5002-071
VNBK-10	315	255	73	20	190	210	80	6	3-M12	93	32	52	12	16	3150	30.5	Ø12-250	Ø72-240	5002-072
VNBK-12	370	305	80	22	250	285	105	5	3-M12	118	40	59	14	18	3670	46.8	Ø15-300	Ø86-290	5002-073