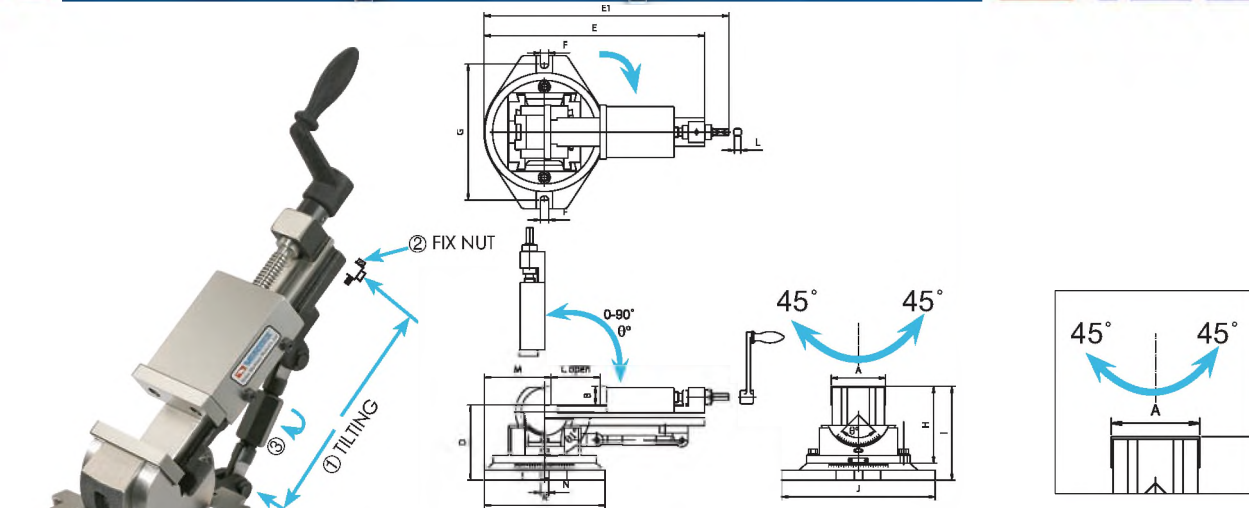


# 3-Way Angle Milling Vise



ANGLE MILLING VISE



- Angles can be set in 3 dimensions. Swivels 360° around base. The vise can be elevated through 90° from the horizontal to vertical. And also can be tilted on its lower angle base up to 45° in both right and left.
- Tilting of any angle all keep the workpiece steady, smooth.
- Particularly the clamping part of screw is strengthened by a bush made of gunmetal.
- Turn ① to adjust tilting angle. fix ② to lock.



## Specifications

| ORDER NO. | A   | B  | C OPEN | D   | E   | E1  | F  | G   | H   | I   | J   | K   | L  | M   | N  | $\theta$ | $\theta_1$ | MAX. Clamp Force (kgf) | G.W. (kgs) | Meas CFT | CODE NO. |
|-----------|-----|----|--------|-----|-----|-----|----|-----|-----|-----|-----|-----|----|-----|----|----------|------------|------------------------|------------|----------|----------|
| VW-3      | 80  | 31 | 85     | 126 | 335 | 370 | 15 | 210 | 127 | 157 | 240 | 185 | 10 | 95  | 16 | -45°~45° | -0°~90°    | 800                    | 16.7       | 40x21x19 | 1002-080 |
| VW-4      | 110 | 38 | 116    | 152 | 448 | 497 | 17 | 276 | 157 | 190 | 311 | 245 | 13 | 135 | 16 | -45°~45° | -0°~90°    | 1000                   | 32.7       | 56x27x23 | 1002-081 |
| VW-5      | 135 | 40 | 145    | 170 | 530 | 580 | 17 | 310 | 173 | 210 | 358 | 271 | 13 | 140 | 16 | -45°~45° | -0°~90°    | 1600                   | 49.4       | 66x31x25 | 1002-082 |

# Quick Index Holder

**NEW**

### VFV-40H

- SHANK HEX. TYPE
- FOR CUTTING 6 DIVISION TYPE
- EACH 60° FOR 1 DIVISION
- ✳ FOR CUTTING HEX. & SQUARE SHAPE ON ROUND BAR & ROD
- ✳ THROUGH HOLE

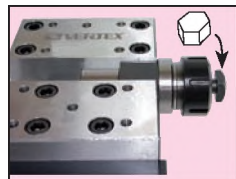
### VFV-41S

- SHANK SQUARE TYPE
- FOR CUTTING 4 DIVISION
- EACH 90° FOR 1 DIVISION

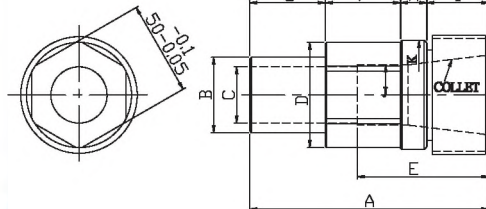
patent  
**PAT.**



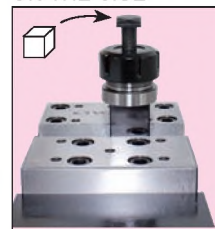
60° DIVIDING FOR PUT ON THE VISE



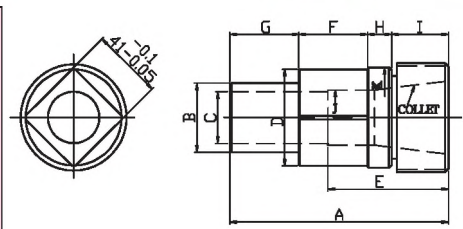
HORIZONTAL



90° DIVIDING FOR PUT ON THE VISE



VERTICAL



mm

| ORDER NO. | A   | B  | C  | D  | E  | F  | G  | H  | I  | J  | K  | COLLET SIZE        | WEIGHT KGS | CODE NO. |
|-----------|-----|----|----|----|----|----|----|----|----|----|----|--------------------|------------|----------|
| VFV-40H   | 127 | 40 | 30 | 56 | 70 | 40 | 40 | 14 | 33 | 32 | 58 | ER-40<br>7 PCS/SET | 4.8        | 1001-101 |
| VFV-41S   | 127 | 40 | 30 | 56 | 70 | 40 | 40 | 14 | 33 | 32 | 58 | ER-40<br>7 PCS/SET | 5.2        | 1001-102 |